

# PRODUCT INFORMATION PACKET

Model No: 056B17F5328  
Catalog No: T018  
1-1/2,1725,TEFC,56H,1/60/115/208-230  
Power Tools



Regal and Marathon are trademarks of Regal Beloit Corporation or one of its affiliated companies.

©2018 Regal Beloit Corporation, All Rights Reserved. MC017097E





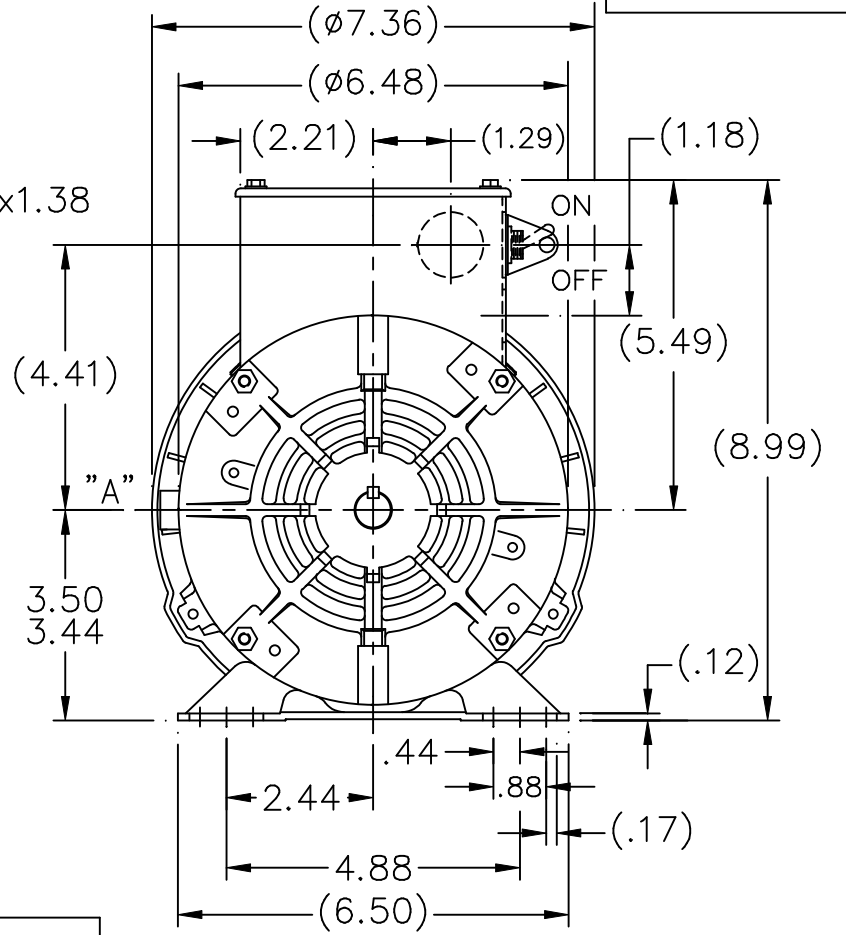
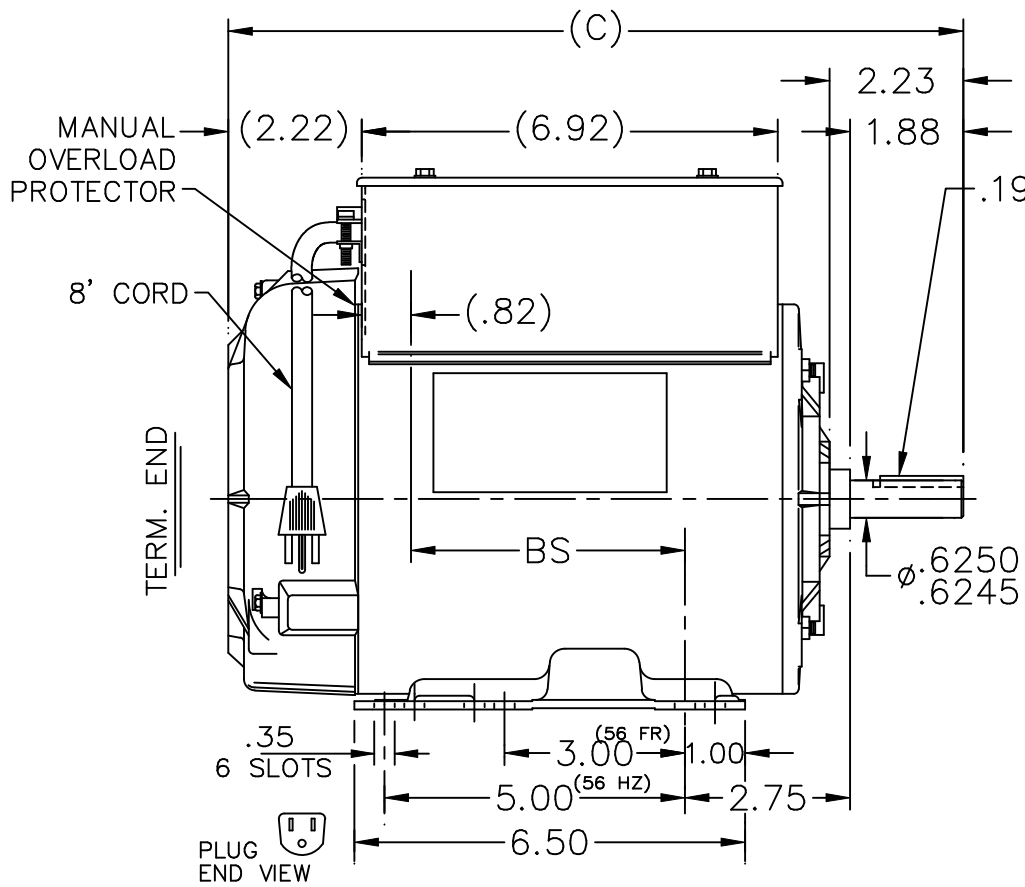
### Nameplate Specifications

Output HP	1.50 Hp	Output KW	1.1 kW
Frequency	60 Hz	Voltage	115/208-230 V
Current	13.6/7.5-6.8 A	Speed	1725 rpm
Service Factor	1.15	Phase	1
Efficiency	81.5 %	Duty	Continuous
Insulation Class	B	Design Code	L
KVA Code	K	Frame	56H
Enclosure	Totally Enclosed Fan Cooled	Overload Protector	Manual
Ambient Temperature	40 °C	Drive End Bearing Size	6205
Opp Drive End Bearing Size	6205	UL	Recognized ( Not Protector)
CSA	Y	CE	N
IP Code	43		

### Technical Specifications

Electrical Type	Capacitor Start Capacitor Run	Starting Method	Across The Line
Poles	4	Rotation	Selective Counterclockwise
Mounting	Rigid base	Motor Orientation	Horizontal
Drive End Bearing	Ball	Opp Drive End Bearing	Ball
Frame Material	Rolled Steel	Shaft Type	Single Special Extension
Overall Length	13.73 in	Shaft Diameter	0.625 in
Shaft Extension	1.88 in	Assembly/Box Mounting	F3
Outline Drawing	A-104267-856	Connection Diagram	102006-60

This is an uncontrolled document once printed or downloaded and is subject to change without notice. Date Created: 07/02/2018



NOTE:  
NAMEPLATE TO BE READ  
FROM LOCATION "A"

DASH	FR.	C	BS		DASH	FR.	C	BS	
					806	56-80	13.23	5.55	
656	56-65	11.73	4.05		856	56-85	13.73	6.05	
706	"-70	12.23	4.55						
756	"-75	12.73	5.05						

NO.	REVISION	BY & DATE	CHK	TOLERANCES UNLESS SPECIFIED	
				DEC.	INCHES
4	REMOVED ONE 1.09ø KNOCKOUT & ONE .88ø KNOCKOUT. CN24300-382	NJS 03-01-2001	.X	±.1	
3	REVISED "C" & "BS" DIMS. REDUCED BY: .09 CN #, WAS CN24300-138 CN24300-235	MSG 12-04-2000	.XX	±.03	
2	SHAFT EXT. WAS (2.32) CN24300-235	MJD 08-04-1998	.XXXX	±.0005	
			ANG	±7'30"	

**MARATHON ELECTRIC**

TITLE OUTLINE  
56 FRAME - BB - TEFC - 1ø

MAT'L.

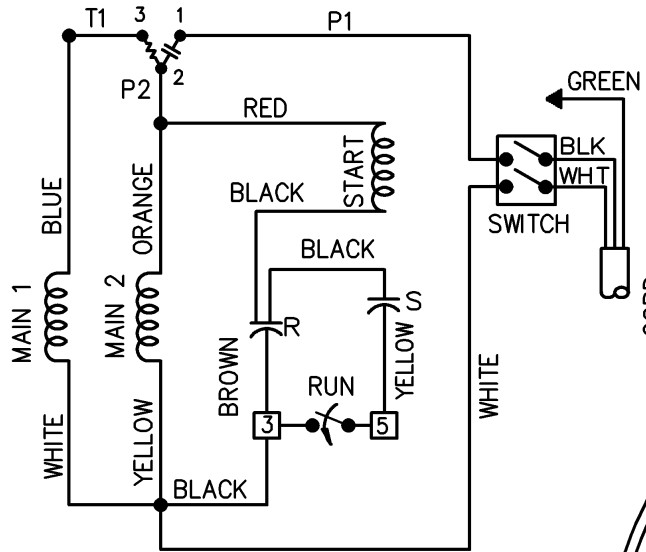
FINISH

DRAWN PGK 03-26-1997
CHK MRB 03-27-1997
APPD ET 03-31-1997
SCALE 5=16
REF
FMF
PREV

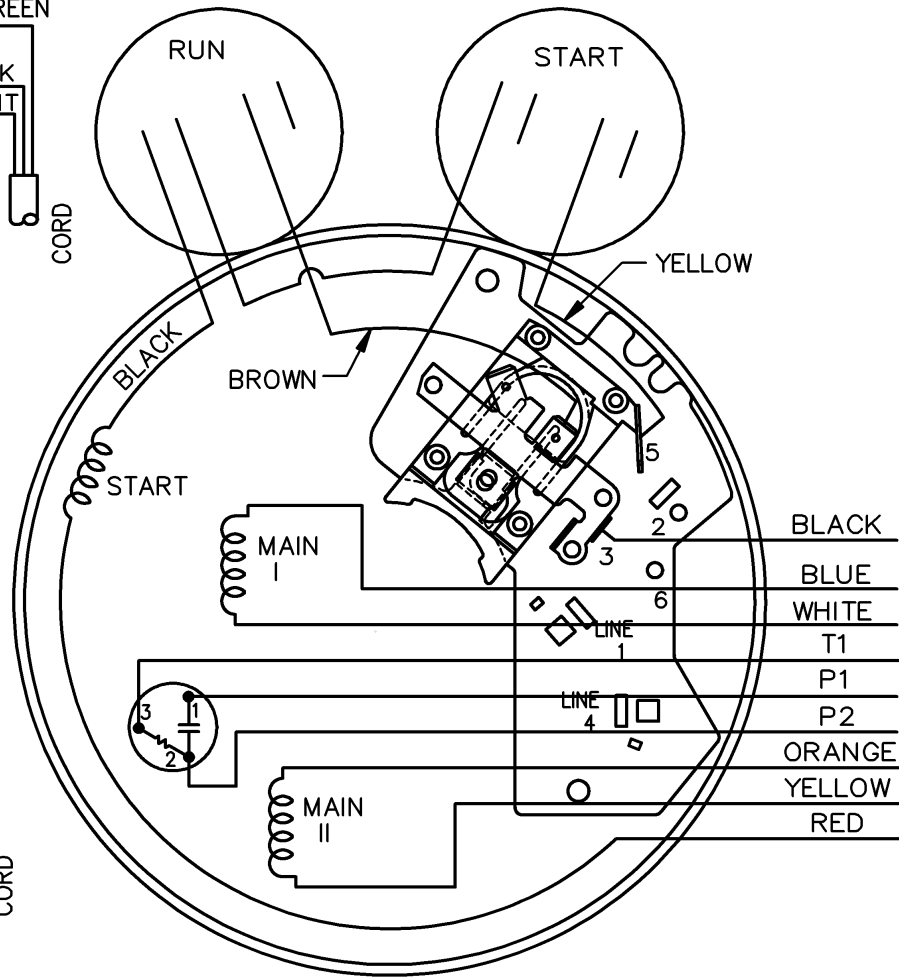
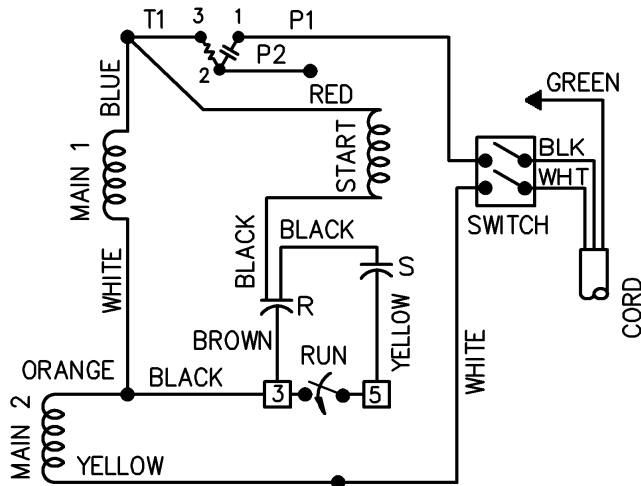
THIS DRAWING IN DESIGN AND DETAIL IS OUR PROPERTY AND MUST NOT BE USED EXCEPT IN CONNECTION WITH OUR WORK ALL RIGHTS OF DESIGN AND INVENTION ARE RESERVED THIS IS AN ELECTRONICALLY GENERATED DOCUMENT - DO NOT SCALE THIS PRINT

RFP	CAD FILE 104267	SIZE A	DRAWING NO. 104267	PAGE OF	REV. 4
DIST WP					

LOW VOLTAGE C.C.W.



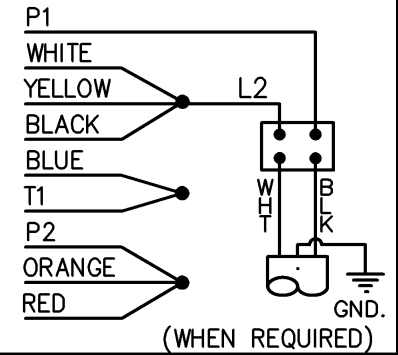
HIGH VOLTAGE C.C.W.



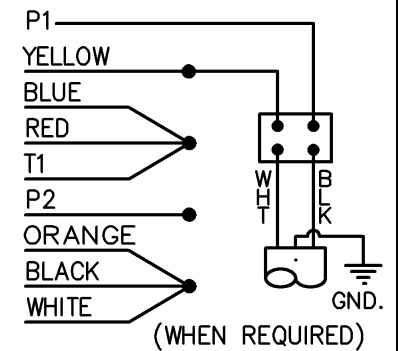
102006-60

DUAL VOLTAGE  
CAP START-CAP RUN  
OVERLOAD  
SELECT ROTATION

LOW VOLT. CCW ROT.



HIGH VOLT. CCW ROT.



FOR CW ROT. EITHER  
VOLTAGE INTERCHANGE  
RED WITH BLACK LEAD.

				TOLERANCES UNLESS SPECIFIED			DRAWN DD 04-20-1994		
				DEC.	INCHES		CHK ML 04-21-1994	APPD MB 04-26-1994	
03	ADDED (WHEN REQUIRED TO CORD)	MU29193	CAV 02-25-2000	.XX	±.02	TITLE CONNECTION DIAGRAM	SCALE 5=8		
02	CAP LEAD COLORS REV'D	CN 16210	MRB 11-16-1994	.XXX	±.005		REF		
01	NEW DRAWING	4138426	DD 05-02-1994	.XXXX	±.0005		FMF		
NO.	REVISION	BY & DATE	CHK	ANG	±7'30"	FINISH	PREV		
THIS DRAWING IN DESIGN AND DETAIL IS OUR PROPERTY AND MUST NOT BE USED EXCEPT IN CONNECTION WITH OUR WORK ALL RIGHTS OF DESIGN AND INVENTION ARE RESERVED THIS IS AN ELECTRONICALLY GENERATED DOCUMENT - DO NOT SCALE THIS PRINT				RFP	CAD FILE 10200660		SIZE A	DRAWING NO. 102006-60	PAGE OF 03
				DIST WP					

CERTIFICATION DATA SHEET

Model#: 56B17F5328 D WINDING#: ZB410 NONE 3  
 CONN. DIAGRAM: 102006-60 ASSEMBLY: F3  
 OUTLINE: A-104267-856

TYPICAL MOTOR PERFORMANCE DATA

HP	KW	SYNC. RPM	F.L. RPM	FRAME	ENCLOSURE	KVA CODE	DESIGN
1 1/2	1.12	1800	1725	56H	TEFC	K	L

PH	Hz	VOLTS	FL AMPS	START TYPE	DUTY	INSL	S.F	AMB°C	ELEVATION
1	60	115/208-230	13.6/7.5-6.8	ACROSS THE LINE	CONTINUOUS	B3	1.15	40	3300

FULL LOAD EFF: 81.5	3/4 LOAD EFF: 80.2	1/2 LOAD EFF: 75	GTD. EFF	ELEC. TYPE	NO LOAD AMPS
FULL LOAD PF: 87	3/4 LOAD PF: 85.3	1/2 LOAD PF: 79	0	CAP START CAP RUN	4.4 / 2.2

F.L. TORQUE	LOCKED ROTOR AMPS	L.R. TORQUE	B.D. TORQUE	F.L. RISE°C
4.5 LB-FT	105 / 52.5	14.9 LB-FT 331	11.3 LB-FT 251	-

SOUND PRESSURE @ 3 FT.	SOUND POWER	ROTOR WK^2	MAX. WK^2	SAFE STALL TIME	STARTS /HOUR	APPROX. MOTOR WGT
- dBA	- dBA	0 LB-FT^2	- LB-FT^2	- SEC.	-	0 LBS.

\*\*\* SUPPLEMENTAL INFORMATION \*\*\*

DE BRACKET TYPE	ODE BRACKET TYPE	MOUNT TYPE	ORIENTATION	SEVERE DUTY	HAZARDOUS LOCATION	DRIP COVER	SCREENS	PAINT
STANDARD	BRAKE	RIGID	HORIZONTAL	FALSE	NONE	FALSE	NONE	GRAY (POWDER)

BEARINGS		GREASE	SHAFT TYPE	SPECIAL DE	SPECIAL ODE	SHAFT MATERIAL	FRAME MATERIAL
DE	OPE						
BALL	BALL	POLYREX EM	SGL SPL EXT	0.625 x 1.88 IN SEK WITH 25 MM BEARING	NONE	1144 STRESSPROOF (C-223)	ROLLED STEEL
6205	6205						

THERMO-PROTECTORS				THERMISTORS	CONTROL	SPACE /n HEATERS
THERMOSTATS	PROTECTORS	WDG RTDs	BRG RTDs			
NONE	MANUAL	NONE	NONE	NONE	FALSE	NONE VOLTS

If Inverter equals NONE, contact factory for further information

\*  
N  
O  
T  
E  
S  
\*

INVERTER TORQUE: NONE
INV. HP SPEED RANGE: NONE
ENCODER: NONE
NONE NONE
NONE NONE PPR
BRAKE: PROVISIONS FOR KIT NONE
NONE P/N NONE
NONE NONE
NONE FT-LB NONE V NONE Hz

DATE: 06/27/2017 05:54:09 AM  
 FORM 3531 REV.3 02/07/99  
 \*\* Subject to change without notice.